



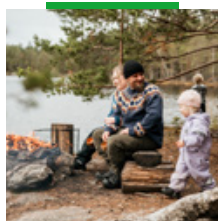
Travel Magazine

Sastamala

Experiences for every season | www.visitsastamala.fi/en

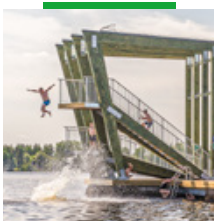


A city full of stories
and experiences



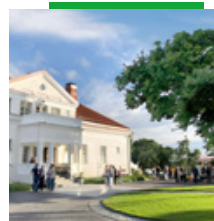
7
NATURE

Nature comes
alive



10
FAMILIES

Exciting
experiences



17
CULTURE

Something old,
something new

Find your holiday highpoints in Sastamala!

What kind of traveller are you? Are you looking for something to keep the whole family buzzing? Or are you yearning for the relaxing peace and quiet of hiking in the forest along marked tracks? Perhaps culture is your thing? Whatever your preference, Sastamala offers a multitude of things to see and do!

Sastamala invites travellers to explore a unique blend of culture, history and peaceful nature. Here you can step into the world of literature, visit medieval churches, taste local delicacies, and enjoy some of the most beautiful landscapes in our country – whether in the lively town center or the tranquil villages.

Whether you are a curious adventurer, a culture enthusiast, or simply looking for a relaxing holiday, Sastamala offers experiences that make a lasting impression. The city breathes both history and modern life: medieval stone churches tell centuries-old stories, while local events, festivals, and market life bring vibrant energy to the present day.

For those hungry for culture, Sastamala is truly a second-to-none destination. Book lovers will appreciate The Old Books Festival organized every summer at the end of June, and Pukstaavi, the Museum of Finnish book brings visitors to the roots of Finnish book culture. Village festivals, summer events, and a lively cultural scene enrich the city throughout the year. Families with children will enjoy Mr. Clutterbuck's house, where the beloved stories of the famous artist Mauri Kunnas come to life in a playful way.

Nature lovers will find plenty to enjoy as well. The lakes invite you onto the water, and the majestic Ellivuori outdoor park offers outdoor activities year-round – hiking, cycling, or downhill skiing in winter.

Sastamala is a place where history and modern life meet naturally. The city offers tastes, stories, and experiences that delight all senses.

Explore events, attractions, and tips:

 www.visitsastamala.fi/en

 @VisitSastamala

 VisitSastamala

**Come and find
your own story
in Sastamala!**



SASTAMALA

Established: 1st January 2009

Population: 23,400 residents

Total area: 1,429 km²

Good transport connections:

National roads 11 and 12, as well as the railway, provide easy access to destinations such as Pori, Turku and Tampere, all of which are less than an hour's drive away. The Karkku and Vammala railway stations are located along the Tampere–Pori line, renowned for some of the most scenic landscapes in the region. There are also good coach connections, for example to Tampere. Tampere–Pirkkala Airport is approximately 50 km away.

Editor-in-chief: Maarit Rapp

Editorial team: Huima, the tourist destinations in Sastamala, Maarit Rapp

Design: Brand agency Daddy Finland

Cover photo: Vilma Seppä

Photos: City of Sastamala Photo Archive, Visit Tampere Laura Vanzo, Tiikerikuva Jukka Salminen, Reijo Keskikiikonen, Hermanni Keskikiikonen, Kari Haila, Jaakko Pirttikoski, Martti Kainulainen, Henniina Ylitalo, Vilma Seppä, Emilia Valtanen/Valtanenphotos, Jani Hanhijärvi, Ellivuori Resort, Pukstaavi and Esa Ijäs.

Printed by: Vammaspaino Oy

Print run: 4,000 copies

Old Books Festival



Folk Music Event



Enjoy events in Sastamala

What are the ingredients of summer in Sastamala?

Books, music and art. Culture both high and rustic. Events surrounded by natural beauty. Summer events and sports, particularly volleyball, as we are in the home town of the Finnish volleyball champions, team VaLePa. Old and new. Speed and serenity. Something for everyone.

Sastamala's event year is filled with experiences from the cozy atmosphere of the villages to the

bustle of the town center. Literature, music, theater, sports, and local traditions combine to create a diverse and inspiring program throughout the year. Summer once again brings a series of events where traditions, new ideas, and community spirit meet – along with unforgettable moments in the heart of nature.

In Sastamala, you can experience stories, performances, concerts, and

village celebrations that make the year lively and warm-spirited. Nature trails, lake landscapes, and outdoor events invite you to move and enjoy the peace of nature.

Pick your favorite events and plan your own Sastamala summer!

More information and an up-to-date event calendar: www.visitsastamala.fi/en

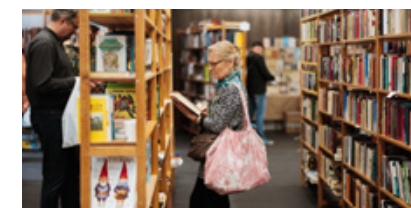
1 Old Books Festival

Book lovers always find every year their way to Sastamala a week after Midsummer for the old books event “Vanhan kirjallisuuden päivät”.

A diverse and engaging programme is built around each year's current theme. The main attraction of the event are the used book sellers' stalls, but you can also find stands with dozens of exhibitors, both associations and companies, offering you the latest works and news in the diverse literary sector. In addition to book sales, the huge tent in the yard also has restaurant services.

www.vanhankirjallisuuden-paivat.com

Finnish only. Vexve Arena, Ratakatu 5, Sastamala

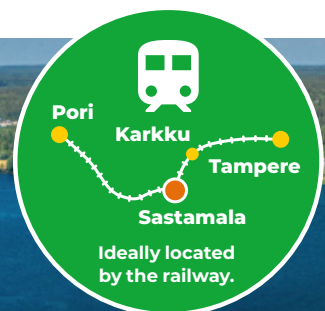


2 Folk music event Kiikoisten Purpurit

Kiikoisten Purpurit is a family-friendly folk music, folk dance and heritage event held at the weekend after Midsummer in the old village centre of Kiikoinen.

www.kiikoistenpurpurit.fi

Finnish only. Kiikostentie 47, Sastamala



Sastamala City Centre



3 Sastamala Gregoriana

Sastamala Gregoriana is one of the largest and oldest early music events in Finland. Every year, the festival gathers mid-July around 5,000 listeners to enjoy early music in Sastamala's medieval stone churches and other cultural sites.

At Sastamala Gregoriana, you can step back in time and hear how the most beautiful melodies of the Middle Ages, the Renaissance and the Baroque era come to life through the interpretations of world-class musicians in enchanting concert venues.

The 30-year-old festival's annual cycle includes a spring Early Music Day concert, where the summer festival programme and performers are announced, a five-day festival in July, a coffee concert in autumn and a multi-sensory surprise at Christmas time.

Another important part of the festival is **outreach work**, taking early music to schools, day-care centres, care homes and various communities across the region.



www.sastamalagregoriana.fi



4 Old Parsonage Tyrvään Pappila & Stone Barn

Old Parsonage Tyrvään Pappila and the neighbouring **Stone Barn** offer visitors a summer full of art, music and atmosphere. The Stone Barn's unique art exhibitions are always an experience, as is the Pappila's enchanting garden, which blooms throughout the entire summer. Visitors can explore around 100 named plants independently with the help of a map. In addition to the plants, the area features sculptures by seven different artists.

Guided tours for groups are available both inside the parsonage and in the garden.

Music lovers can enjoy Wednesday evening concerts throughout the summer at the amphitheatre. Admission is free for everyone, and the venue is fully accessible.

The Kivinaavetta Stone Barn will host **Tyrvää Jazz** every September, featuring a lineup of compelling performers. Welcome to enjoy top-level concerts throughout the weekend! The event is organised in cooperation with Tyrvää Parsonage.

www.artpappila.fi

www.tyrvaajazz.fi

www.tyrvaanpappila.fi

Asemakatu 4, Sastamala



5 The May Day Car Parade 1st May 2026

The May Day Parade is a family event held in Sastamala, around the Vammala Market Square. Around 200 impressive vintage and hobby vehicles – from mopeds to trucks – take part. The programme includes a public vote for the audience's favourite vehicle, speeches, musical performances and food stalls.

On May Day, the city centre is filled with a true festival atmosphere as thousands of people gather to admire the vehicles, meet one another and enjoy the unique atmosphere.

6 Pirunvuori Hill and artist Danielsson's stone atelier

Pirunvuori Hill in Karkku has been a popular destination since the 19th century, drawing visitors with its dramatic views and peaceful natural setting. The hill is also home to a cave that, according to local legend, was once used by the devil himself.

The area can be explored on a guided tour or independently along marked trails. The trail to the cave starts near Ellivuori Hotel.

In 1906, painter Emil Danielsson built a stone atelier on Pirunvuori, later known as his stone castle. Today, the building is maintained by the city of Sastamala, open in summer and hosting changing exhibitions.

A guided walking tour of Pirunvuori and the stone atelier is available year-round for 135 €. Bookings via Sastamala tourist information: matkailu@sastamala.fi.



7 Summer Theatres

Summer theatre, in Finnish "kesäteatteri" is a very popular cultural tradition in Finland. Summer theatre is often arranged in beautiful outdoor settings.

Kelarannan kesäteatteri Suodenniemiellä
www.suodenniemi-seura.fi

Kiikoisten kesäteatteri
www.facebook.com/KiikoistenKesäteatteri

Romulan taiteellinen teatteri
www.romulantaiteellinenteatteri.com

Rämsöön kesäteatteri
www.ramsoo.fi/kesateatteri

Suuliteatteri
www.suuliteatteri.com

Teatteri Vuokkomaa
www.facebook.com/p/Teatteri-Vuokkomaa

Tyrvään Pappilan Kivinaavetta
www.tyrvaanpappila.fi

Vesarannan teatteri
www.vesarannankesateatteri.com

You can always find up-to-date information about events online or ask for tips in English from the tourist information office: matkailu@sastamala.fi

www.visitsastamala.fi/en

Also across social media channels:

[facebook.com/visitsastamala](https://www.facebook.com/visitsastamala)

[instagram.com/visitsastamala](https://www.instagram.com/visitsastamala)

Social media content is in Finnish.

Refreshing waters, enchanted forests



In Sastamala, there is unspoiled nature all around you

The heart of the town is nestled between the biggest lakes along the Kokemäenjoki River: Lake Rautavesi and Lake Liekovesi. The Vammaskoski Rapids between them can be crossed via the massive granite bridge.

The long and narrow waterway of Kokemäenjoki River offers boaters 60 kilometres of free routes, and you can stop over on many islands. The waterways offer fine views of, for example, Tyrvää Church, St. Olaf's Church and St. Mary's Church as well as the whole of Sastamala from a new perspective.

By boat or canoe

Finland is the land of thousands of lakes, and Sastamala has 176 of them, both big and small, and many

in active leisure use. The whole Sastamala area offers excellent opportunities for taking to the waters in a leisurely manner. There are rental sites around the town where you can rent SUP boards, rowing boats, kayaks or canoes.

Sastamala covers a large geographical area, and the Kokemäenjoki River runs right through it. So even when you're driving, cycling or walking along roads not immediately at the waterfront, you can still almost always spy the river winding along somewhere in the scenery.

There is so much to catch for those who enjoy fishing, as the varied waters are home to pike, perch and pikeperch, among many other species. In early summer you can even find natural populations of

the asp, rare elsewhere in Finland, in river sections with a strong current in the Kutala and Ellivuori areas.

By bike

You can also admire beautiful scenery by bike. To make it easy, hop on one of our proposed routes for example the beautiful Rauta Trail which offers magnificent landscapes and attractions, two medieval churches, and the environments that have inspired many of Finland's national artists.

More information:

www.visitsastamala.fi/en
www.jarvienreitti.fi/en
www.jokireitti.fi/en



Sastamala – where nature comes alive

Explore some of the most beautiful
trails and hiking routes

Ritajärvi nature reserve

Ritajärvi is a true natural gem of Pirkanmaa region and all of southern Finland. It is one of the largest areas protected through the METSO Forest Biodiversity Programme. The nature reserve consists of small wilderness-like lakes and stream valleys, together forming a beautiful, rolling, and untouched landscape. The area features diverse natural forests, rocky terrain, and impressive boulders.

A map can be found on Visit Sastamala's website, making route planning easy. Even without a map, navigation is simple thanks to good signage. The Valkeajärvi route is short and easy at 2.3 km. Ylinen Ritajärvi (4.4 km) and Alinen Ritajärvi (4.8 km) offer moderately challenging options. Completing all three lakes adds up to over eight kilometers. Along the routes you'll find several campfire sites and dry toilets, and there is a lean-to shelter between Valkeajärvi and Ylinen Ritajärvi. Firewood is available at the Paavinhattu rest area.

Ritajärvi's varied terrain and boardwalks are especially praised by families with children. The area is suitable for year-round visits, and many trails can be used even in winter.

Sastamala also offers other great nature destinations, such as Otamus, Kuasman Kiäppi, and the Suodenieniemi hiking routes. Visitors are encouraged to practice zero-waste hiking, so remember to carry your

trash with you. The main entrance and one parking area are located at Ritajärventie 358, Sastamala. Note for GPS users: the correct access road runs via Sastamalantie (249) and Horniontie.

[www.visitsastamala.fi/en/
matkailukohteet/
ritajarvi-nature-reserve](http://www.visitsastamala.fi/en/matkailukohteet/ritajarvi-nature-reserve)

Address for the main entrance to the hiking area and one of the three parking areas: Ritajärventie 358, Sastamala.





Information board at Rusu Trail

The Rusu Trail Network

The Rusu Trail Network in Lantula offers varied nature experiences for the whole family. The area features three well-marked trails: the Rusu Trail (5.2 km), the Scenic Trail (3 km) and the Koivularo Trail (2.1 km). The paths run mainly through forested terrain on privately owned land. The trail network is clearly signposted and equipped

with information boards. Along the way, hikers can take a break at the hut in the courtyard of Lantula House or at the Rusuvuori lean-to shelter – both have firewood supplies and dry toilets.

www.lantula.fi/rusun-reitti
Lantula-talo, Vatajantie 396, Sastamala

Taipaleenvuori outdoor recreation area

Located in southern Sastamala on the shores of Lake Ylistenjärvi, the Taipaleenvuori outdoor recreation area covers 17.5 hectares. At the heart of the area is a lean-to shelter with a campfire site and a table with benches. A nearby parking area is about 150 metres away.

On the hiking trail that circles Lake Kuorsumaanjärvi in Kiikoinen, maintained by the local village association, you can enjoy lake, forest and wetland landscapes, listen to the sounds of nature, breathe in forest scents and observe animals, plants and other small wonders of nature.

TIP!

Explore hiking and outdoor destinations on the Visit Sastamala website.



Keikyä Suspension Bridge – a majestic crossing

Keikyä Suspension Bridge is one of Sastamala's best-known landmarks – and for good reason. At 228 meters, it is Finland's longest wooden suspension bridge, gently spanning across the Kokemäenjoki River and offering unique views of the flowing water and surrounding landscapes. It connects the villages of Peevola and Pehula, and over the years it has become both a source of local pride and a favorite destination for visitors.

The bridge also has an inspiring story. A major renovation in 2021 was carried out by the heritage association Keikyän Perikunta through volunteer work – a remarkable showcase of community spirit and local identity. The renovation restored the bridge to its former glory and gave it new life as a route for walkers, cyclists, and photographers.

Crossing the suspension bridge gives a small sense of adventure as the structure gently sways underfoot. For many, it's a traditional part of summer outings, and cyclists especially value it as part of the riverbank routes. The scenery changes with the seasons – from golden summer evenings to misty mornings and the quiet landscapes of winter – each offering a different view of the bridge.

www.visitsastamala.fi/en/matkailukohteet/keikya-suspension-bridge

The bridge is located in the Keikyä area of Sastamala and it crosses the Kokemäenjoki River between Myllytie road and Peevontie road.

Lakeside Golf

Just 10 minutes from Sastamala center and Ellivuori area, Lakeside Golf offers 36 holes across two distinctive courses. The scenic Järvenranta Course features lakeside views and varied elevations, while the newer Pirunpelto Course winds through rocky terrain shaped by the Ice Age. Both promise beauty and challenge for golfers of all levels.



Lakeside Golf

www.lakesidegolf.fi
Sastamalantie 1901, Sastamala

Kuasman kiäppi

The hiking trail around Kuorsumaa village and Lake Kuorsumaa-järvi in Kiikoinen offers lakeland, forest and wetlands scenery, sounds and scent of nature, and an opportunity to observe animals, plants and other little wonders of nature. "Kuasman Kiäppi" is a hiking trail of 14 kilometres maintained by the local village association. "Lisäkiäppi" is an extra few kilometres that takes you to wet spruce forest where – who knows – you might even spot a troll or two. There are signs along the route telling you about the environment, points of interest and local history. There is a bird watching tower with

a barbeque and open fire site as well as a lean-to shelter nearby.

Other places to rest your legs are the Pappilankallio and Kiikanhuhdanmäki rest spots as well as a barn called Pikku-Tyrvään taukolato. The starting points with map and information boards can be found along trunk road 44, at the beginning of Hepokorventie road and Pikku-Tyrvääntie road as well as close to the parking area for the bird watching tower along Kakkurilammin tie road.

www.visitsastamala.fi/en/matkailukohteet/kuasman-kiappi-hiking-trail

Hepokorventie 6, Sastamala

Otamus

Otamus is "an experience park" maintained by the village association of Mouhijärvi. The area provides striking scenery and has an idyllic summer cafe, a rocky beach for swimming, a lean-to for resting in the forest, barbeque spots and a pier for visiting boats.

There is an easy two-kilometre nature trail in the Ristijärvi area

and the "Tilankierros" trail and "Salmin kierros" trail are 6–8.5 kilometres. All of the trails are clearly marked and there are information boards to explain the nature and history of the area.

www.otamus.fi

Otamussillantie 65, Sastamala

Kutalan Kasino

Like any major metropolis, Sastamala even has a "casino" – although Kutalan Kasino is not a place for gambling or anything of the sort, as it is in fact a summer kiosk frequented by travellers, summer dwellers and locals as well as visitors coming by boat.

The Kasino, located on a spot of natural beauty by Lake Kulovesi, is the place to go for coffee and ice cream. There is a playground for children and, as well as occasional summer events, it hosts a regular village market every Friday and a meeting for motorcyclists on Mondays.

www.kutala.net/kasino

Finnish only.
Kutalantie 783, Sastamala

Pirulanvuori observation tower

Sastamala is a geographically extensive municipality that provides ample impressive scenery and wonderful viewpoints. There is also a rich heritage of stories about the devil, in Finnish "piru", having frequented the area, which can also be seen in many local names. You can climb to the top of one of his hills, Pirunvuori, in Karkku, or up to the observation tower on Pirulanvuori in Suoden-niemi, for example. The 15-metre Pirulanvuori observation tower offers beautiful scenery overlooking lakes and forests – the view is even represented on the Finnish 1 Euro coin.

www.suodenniemi-seura.fi/tietoa-suodenniemesta/pirulanvuoren-nakotorni

Laviantie 600, Sastamala.
From the parking area, it is a 250 m walk to the observation tower.



Pirulanvuori observation tower



Keikyä Suspension Bridge



Lean-to-shelter at Taipaleenvuori



Otamus



Kutalan Kasino

Kaalisääri offers a fun play area for younger children, with an outdoor gym and a diving tower for older ones.



Exciting experiences for families

You can see, hear, do and experience so many things with your children all around Sastamala. You can ski in Ellivuori, pet sheep in a farmyard zoo or visit Mr. Clutterbuck's house of fun activities. Many of the nature trails in the area are also suitable for the whole family.

Mr. Clutterbuck's House

Characters familiar from the children's books of cartoonist and children's author Mauri Kunnas come to life at Mr. Clutterbuck's house ("Herra Hakkarainen talo"). Mr. Clutterbuck is a somewhat silly sleepwalker who

walks through worlds illustrated by Kunnas with little regard for what is going on around him. He is the most famous sleepwalker in Sastamala – or maybe even in the whole world!

At Mr. Clutterbuck's house, you can play house in his own home, get involved in a sword-fight as a knight under the watchful eyes of a dragon, fly all the way up to space to visit



space ships and alien planets as well as enjoy the leisurely feeling of a 19th century market. The numerous details familiar from the pages of Kunnas' books are sure to capture your imagination here as well.

In addition to the inside rooms that are open all year round, you can have lots of fun in the yard where you can drive pedal cars and tricycles from May until the end of October.

herrahakkaraintalo.fi/english
Marttilankatu 10, Sastamala

Kaalisääri and Pororanta delight visitors

Kaalisääri is one of Sastamala's top destinations for sports and summer activities – a place buzzing with life from morning to evening. The area is full of energy: the skatepark attracts trick-practisers, beach volleyball courts are busy, and the basketball court echoes with bouncing balls. A popular new addition, the padel court, has brought even more action

to the area. At the diving tower you'll find excited jumpers and cheering friends enjoying summer days by the water.

Right beside Kaalisääri, Pororanta offers a calm and safe environment for families with small children. The shallow, clear water invites playful swimming, and the grassy areas are perfect for picnics, outdoor

games, or simply relaxing in the sun. Pororanta is loved by visitors of all ages and is a must-visit spot for many during summer holidays.

Together, Kaalisääri and Pororanta form a versatile summer area where sports, water activities, relaxation, and beautiful scenery come together. Here, summer feels especially good.

The Kaalisääri skate park is a popular place for skateboarding.





Pukstaavi



PAKENEMA
ESCAPE ROOM EXPERIENCE



Kiviniitty Petting Zoo



Vehmaanniemi

Pukstaavi – happy home of books

Pukstaavi's memorable and participatory exhibitions shed light on books and book culture from multiple perspectives. There is a lot to see and touch in Pukstaavi!

Pukstaavi – The Finnish Museum of the Book is a fun and inspiring destination for families visiting Sastamala, Finland's Book Capital. The museum brings stories to life through interactive exhibitions, playful activities, and hands-on experiences designed especially for children.

Families can explore the world of books together, discover how stories are made, and enjoy creative workshops and seasonal events. Pukstaavi offers a welcoming and relaxed environment where learning feels like play – perfect for curious young readers and their grown-ups.

www.pukstaavi.fi/en/
Marttilankatu 12, Sastamala

Pakenema Escape Room Experience

You and your group are locked in a room, and the clock starts ticking. The pressure builds with every passing minute – only teamwork, clever thinking and sharp observation will lead you to freedom.

Pakenema is known for its imaginative and immersive escape room experiences. The popular Tatu and Patu room has especially delighted visitors with its creativity, humor and surprising twists. Solving the mysteries requires nothing more than curiosity and a willingness to experiment.

The escape rooms are suitable for families as well as groups of adults. Choose from Tatu and Patu (only Finnish), Casino lisa (Fi/Eng) and Toy Museum (Fi/Eng).

www.pakenema.fi
(Finnish only.) Tampereentie 38, Sastamala

Kiviniitty Petting Zoo

Kiviniityn Kotieläinpuisto is a petting zoo and activity park in Sastamala, western Finland.

The park is home to Finnish farm animals such as sheep, cows, pigs, goats, and chickens, as well as deer, reindeer, ostriches, alpacas, and more. Visitors can pet lambs and feed bunnies and guinea pigs with hay.

The park offers plenty of activities for children, including bouncy castles, pedal cars, electric ATVs, playground equipment, and a trampoline park with 11 trampolines. Younger children can enjoy the Magic Forest and daily horseback riding at 1:00 pm (weather permitting). A short nature trail with fun quizzes winds through the surrounding forest.

A summer café and ice cream kiosk are available on-site. Picnic shelters with grills, gas griddles, microwaves, and coffee makers are free to use, and visitors are welcome to bring their own food. Wagons can be borrowed at the entrance, and most paths are accessible with pushchairs and wheelchairs (excluding the nature trail).

www.kiviniitty.fi/info-in-english
Iirilantie 108, Sastamala

Vehmaanniemi – peaceful heritage landscape near the city center

Vehmaanniemi is a seven-hectare heritage landscape close to the center of Sastamala. A marked nature trail circles the peninsula that extends into Lake Rautavesi, passing several Iron Age mounds and offering beautiful lakeside views. The area is part of the Natura network, and the landscape is maintained through traditional methods such as volunteer work and summer grazing sheep – making it an appealing destination for both nature and history enthusiasts.

More information:
www.visitsastamala.fi/en/matkailukohteet/vehmaanniemi-nature-trail
Tampereentie 258, Sastamala



There is a lot to see and touch in Pukstaavi!

Escape rooms are popular with young people.



Taabe farm



Taabe farm



Top family destinations:
www.visitsastamala.fi/en

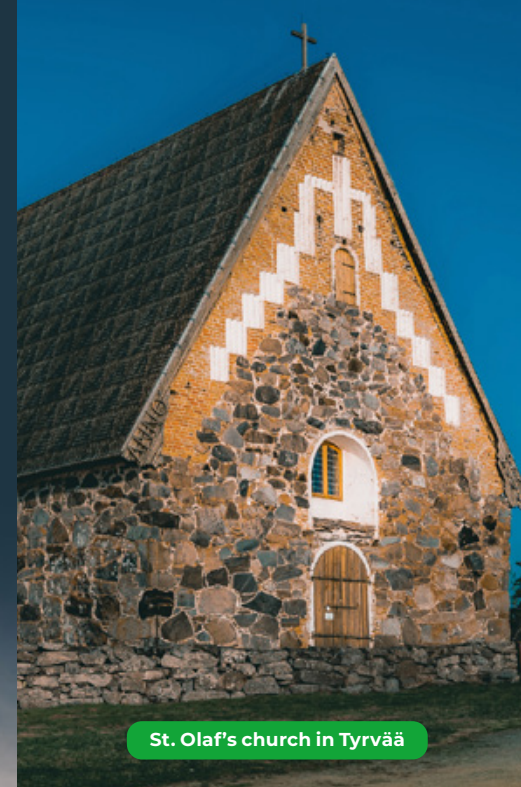
Taabe farm

You'll find the snouted, beaked, and delightfully unusual animals of Taabe farm in Kärppälä, Sastamala. At Taabe farm, a wide variety of animals roam freely around the area and are very friendly and sociable. Be sure to bring some dandelion leaves – they're a favourite treat for many of the animals!

www.taabenfarmi.fi
Ritvaniementie 7, Sastamala

Town of churches

Sastamala has no less than 11 churches. The two oldest ones date back to medieval times, even though one of them has experienced a second birth as it had to be fully renovated after a fire at the turn of the millennium.



St. Olaf's church in Tyrvää



Tyrvää church



St. Mary's church in Sastamala



Tyrvää church

Other churches

Karkku church (1913), Riippiläntie 366
Keikyä church (1912), Akuntie 7
Kiikka church (1807), Kiikanojantie 8
Kiikoinen church (1851), Kiikoistentie 300

Open 1st June–15th August,
weekdays (Mon–Fri) from 9 am to 3 pm

Mouhijärvi church (1858), Kinkerikuja 3
Salokunta church (1960), Kärppäläntie 266
Sammaljoki church (1924), Sammaljoentie 606
Suodenniemi church (1831), Koippurintie 9

St. Olaf's church in Tyrvää

The most famous church in Sastamala, the medieval **St. Olaf's church** in Tyrvää (Tyrvään Pyhän Olavin kirkko), was burned down by an arsonist in September 1997 but it rose from the ashes thanks to devoted volunteers taking charge of the renovation work. The final touches were placed by artists **Kuutti Lavonen** and **Osmo Rauhala** with their new paintings. The doors opened again in August 2009, and almost half a million people have visited the church since then.

The church is located a few kilometres from the town centre. It is open from 11 am–4 pm on Sun–Fri from June to August and on Sundays in September.

Kallialan kirkkotie 50, Sastamala

Highlights

- The hand-worked wooden surfaces by volunteer church builders
- 101 new paintings
- The whole milieu of the church and surrounding areas, the national scenery of Lake Rautavesi and Kalliala village

Further information:
St Olaf's Church of Tyrvää
on Facebook
www.facebook.com/pyhaolavi

Tyrvää church

The main church of the congregation, Tyrvää Church (Tyrvään kirkko) was finished next to the Vammaskoski Rapids in 1855. It was designed by Turku-based architect **P. J. Gylich** who has been compared with the architect of many Finnish landmarks, **C.L. Engel**. Gylich also designed the Mouhijärvi and Kiikoinen churches in Sastamala.

There are only two churches with twin towers in Finland, one being **Tyrvää church** and the other one **St. John's Church** in Helsinki.

Open 1 June–15 August on Mon–Fri from 10 am–3 pm.

Kirkkokatu 1, Sastamala

Highlights

- The altar piece that is a triptych ordered by the Tyrvää congregation from court painter R.W. Ekman, who also did the frescoes in the choir of Turku cathedral, among others
- A plaster cast of the sculpture of Christ by Ville Vallgren
- The beautiful graveyard on the cape jutting into Lake Liekovesi

St. Mary's church in Sastamala

The oldest church in Sastamala, **St. Mary's Church in Sastamala** (Sastamalan Pyhän Marian kirkko), located in the Karkku area was built at the end of the 15th century. It took its present form in the 1960's and the wooden floor was changed back to an earthen floor in 1977.

St Mary's Church is the main venue for the Sastamala Gregoriana festival of early music and also serves as a road church in the summer.

Open every day from 11 am–4 pm in the summer months.

Sastamalan kirkon tie 119, Sastamala

Highlights

- Acoustics – the church is a top-quality concert hall
- Historic details, such as a rare baptism bowl made of stone dating back to the 13th century, medieval wooden sculptures of saints and stretchers
- Pulpit from the 17th century with wood cuttings that inspired artist Osmo Rauhala in his work with the new pulpit of St. Olaf's Church in Tyrvää



Ellivuori – where adventure meets relaxation

Looking for a destination that has it all? Just 40 minutes from Tampere, Ellivuori combines stunning nature, thrilling activities, and cozy comfort. Whether you're planning a family holiday, a weekend escape, or a corporate retreat, Ellivuori offers experiences that make every day unforgettable.

Imagine waking up to serene lake views, breathing in fresh forest air, and stepping straight into adventure. From scenic trails to thrilling slopes, from lakeside relaxation to lively evenings indoors – Ellivuori is your gateway to year-round fun.

Stay & play

Choose from stylish hotel rooms, charming cottages, or the Vuori-Caravan camping area. Each option offers comfort and convenience, surrounded by the beauty of Finnish nature. Start your day with a hike on the legendary Pirunvuori trails, right outside the hotel door, or join a guided tour for deeper insights into local history and landscapes. Groups can book tailor-made packages combining adventure, sports, and wellness experiences.

Action for every season

Summer brings water sports, cycling, and padel, while winter transforms Ellivuori into a ski paradise with six illuminated slopes, four lifts, and a ski school for all levels. Indoors, you'll find billiards, darts, and simulators for golf, hockey and football – perfect for any weather. After an active day, unwind in the sauna or enjoy a cozy evening by the fireplace.



Bike Park thrills

In summer, Ellivuori's Bike Park offers nine downhill trails from blue to black, plus rental bikes and gear for a safe and exciting ride. Whether you're a beginner or a seasoned rider, the park promises adrenaline and unforgettable views.

Entertainment & events

Evenings and weekends come alive with quality entertainment, from live music to themed events. Ellivuori is not just a destination – it's an experience that blends adventure with relaxation.

Plan Your Adventure:

www.ellivuoriresort.fi/en

Ellivuorentie 131, Sastamala

www.ellivuori.fi

Karkunkyläntie 600, Sastamala

Something old, something new and something vintage

Timeless books, inspiring music, historic churches and beautiful architecture, complemented by great food and warm experiences. Sastamala brings the past and present together in a way that feels natural and welcoming.

Ask about guided tours!

Guided site visits, walking and coach tours, as well as themed role-play tours.



Tyrvää Parsonage



Funkkistalo



Marshal Mannerheim's Salon Car



Tyrvää Parsonage



Kiskokabinetti

Tyrvää Parsonage

Unique food, art and events. You can find one of Finland's most beautiful and elegant parsonages in the centre of Sastamala, by Lake Liekovesi. **Tyrvää Parsonage** combines delicious food, art, experiences and events throughout



the year even spilling outside to the lush terrace and the amphitheatre in the summertime.

www.tyrvaanpappila.fi
Asemakatu 4, Sastamala

Villa Royal – a journey through time

Step into the opulent halls of Villa Royal, where gilded ornaments, ceiling frescoes, and crystal chandeliers illuminate interiors inspired by Baroque to Art Nouveau. Created by the late interior artist Markku Ellala, this 120-year-old mansion offers a royal time-travel experience. Today, Villa Royal combines history with modern services, including guided tours and a charming café. Located in Häijää, along Porintie.

www.villaroyalfinland.com
Kortejärventie 200, Sastamala



Villa Royal

Funkkistalo – art, music & café

This 1938 functionalist gem in Sastamala's literary quarter houses a stylish restaurant, café, art gallery, and music hall. Enjoy seasonal exhibitions, concerts, and a peaceful summer terrace.

www.funkkistalo.fi
Marttilankatu 14, Sastamala

Escape to the countryside at Mattilan Majatalo

Discover the charm of a historic Finnish guesthouse surrounded by peaceful nature. Enjoy cozy rooms, a relaxing sauna, and authentic rural hospitality – just 45 minutes from Tampere. Perfect for holidays, celebrations, and unforgettable moments.

www.mattilanmajatalo.fi/en
Kärppälänraitti 112, Sastamala

Marshal Mannerheim's Salon Car

Marshal Mannerheim's Salon Car has stood in the courtyard of Kiskokabinetti since 1969. The carriage was used by Marshal Carl Gustaf Emil Mannerheim on his 75th birthday in 1942, when Adolf Hitler paid a surprise state visit. The two leaders held their negotiations in this very railway carriage.

www.kiskokabinetti.fi/marskin-salonkivaunu
Pirkanmaantie 1057, Sastamala



Herkkujuustola

Herkkujuustola

At Herkkujuustola (a cheese factory) in Sastamala, Swiss cheesemaker Peter Dörig blends traditional expertise with local ingredients. Founded in 2002, this family business produces award-winning cheeses, including the gold-medal StoutVilho. Visitors can enjoy lunch or à la carte dishes at Juustotupa, watch cheese-making through panoramic windows, and shop for artisanal products. Guided tours available in multiple languages.

www.herkkujuustola.fi/en
Kurvosentie 3, Sastamala

Lakeside Golf

Just 10 minutes from Sastamala center and Ellivuori area, Lakeside Golf offers 36 holes across two distinctive courses. The scenic Järvenranta Course features lakeside views and varied elevations, while the newer Pirunpelto Course winds through rocky terrain shaped by the Ice Age. Both promise beauty and challenge for golfers of all levels.



Lakeside Golf

www.lakesidegolf.fi
Sastamalantie 1901, Sastamala

Cultural House Jaatsi

Once the childhood home of Finnish master Akseli Gallen-Kallela, Jaatsi is a historic wooden villa surrounded by old spruces and a riverside garden. Today, it serves as Sastamala's cultural hub, hosting rotating art exhibitions. A visit offers a glimpse into the roots of Finnish art and a charming setting for cultural experiences.

www.visitsastamala.fi/en/matkailukohteet/kulttuuritalo-jaatsi
Gallen-Kallelan katu 1, Sastamala



Stay and enjoy life in the heart of Sastamala

Discover comfort and character just steps from the town center.

Choose Hotel Tunneli for modern convenience with sauna and dining, or unwind at Liekoranta Guesthouse, a cozy retreat with a warm, homely feel. For boutique charm, Hotel Pyynpesä offers stylish rooms and a delightful breakfast experience. Prefer lakeside serenity? Tervakallio Camping combines cabins and nature by Lake Rautavesi. And for those seeking a peaceful escape, Guesthouse Sinun Tähtesi and Ellivuori Resort provide unique stays with year-round activities.

Sastamala offers accommodation for every preference – find your perfect stay!

Discover more unique accommodation options on our website!
www.visitsastamala.fi/en



Map of Sastamala

The next spread features a map of central Sastamala, with advertisements offering additional information and addresses for the locations marked on the map.

Sights, places of interest and activities

- | | | |
|---|---|--|
| A Ellivuori Resort and Ellivuori Ski Center | 11 Lakeside Golf | 24 Vesaranta public beach |
| B Kuasman kiäppi | 12 Sarkia museum | 25 Mätikkö public beach |
| 1 Pirunvuori Stone Castle | 13 Saunaworld | 26 Kelaranta public beach |
| 2 Otamus | 14 Pirulanvuori observation tower | 27 Kiikoinen public beach |
| 3 Taipaleenvuori outdoor recreation area | 15 Karkku evangelical college | 28 Aurajärvi public beach and sauna |
| 4 Villa Royal | 16 Keskistenjärvi bird observation | 52 Rusu trail |
| 5 Old Harsu | 17 Keikyä suspension bridge | |
| 6 Putaja agricultural and earthmoving museum | 18 Herkkujuustola (Swiss cheeses) | |
| 7 Suodenniemi local history museum | 19 Vesaranta summer theatre | |
| 8 Ritajärvi nature reserve area | 20 Karkku public beach | |
| 9 Kuorsumaanjärvi bird observation tower | 21 Kiimajärvi public beach and sauna | |
| 10 Kiviniityn kotieläinpuisto Petting zoo, Kiviniitty domestic animal farm | 22 Beach at Pääjärvi camping | |
| | 23 Sarkijärvi public beach | |

Churches

- | | | |
|---|-----------------------------|----------------------------------|
| 29 Tyrvää church | 32 Kiikka church | 36 Salokunta church |
| 30 Sastamala St. Maria's Church (Sastamala Gregoriana) | 33 Keikyä church | 37 Sammaljoki church |
| 31 Karkku church | 34 Kiikoinen church | 38 Suodenniemi church |
| | 35 Mouhijärvi church | 39 Tyrvää St. Olaf church |

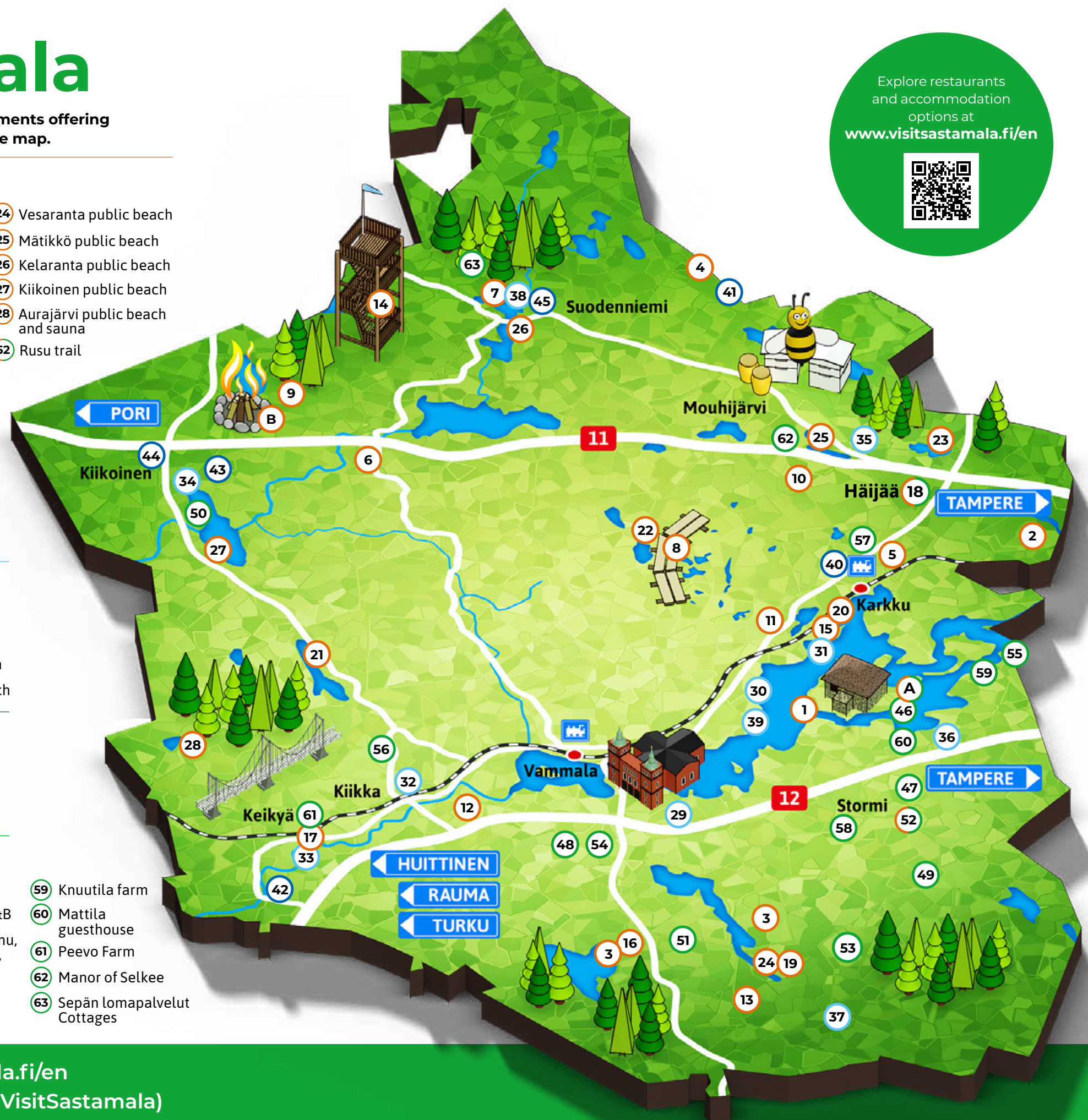
Shopping

- | | |
|--|---|
| 40 Taxi Niskanen | 43 Artesan glass Jan Torstensson |
| 41 Pesonen bee farm | 44 Kultalyhty design & clothes |
| 42 Eliisa Marjaana leather products | 45 Tuori Distilling Company |

Accommodation, restaurants, cafés

- | | | | |
|---|--|--|---------------------------------------|
| A Ellivuori Resort | 50 Muraja farm & cottages | 55 Kutalan Kasino | 59 Knuutila farm |
| 18 Herkkujuustola cheese factory | 51 B&B Kommee Kurki | 56 Kinnalan Koukku B&B | 60 Mattila guesthouse |
| 46 Ellivuori Apartments | 52 Lantula House | 57 Karkun puoti ja pannu, lunch, grocery shop, cafe | 61 Peevo Farm |
| 47 Kiskokabinetti | 53 Välimäki farm | 58 Haapamäki farm | 62 Manor of Selkee |
| 48 Guesthouse Sinun Tähtesi | 54 Rudolfin Keidas sauna & catering | | 63 Sepän lomapalvelut Cottages |
| 49 Virri farm | | | |

Explore restaurants and accommodation options at www.visitsastamala.fi/en



More information is available at www.visitsastamala.fi/en and on our social media channels on Instagram (@VisitSastamala) and Facebook VisitSastamala).

Sastamala City Centre – VAMMALA

Sights, places of interest and activities

- 64** Cultural house Jaatsi
- 65** Mr. Clutterbuck's house
- 66** Pukstaavi museum of Finnish book
- 67** Vexve Arena (Old Books Festival)
- 68** Bus station
- 69** Railway station
- 70** Vammala theatre
- 71** Art Pappila/Tyrvää Parsonage stone barn
- 72** Alasenranta public beach
- 73** Kaalisaari public beach
- 74** Pororanta public beach
- 75** Tervakallio public beach
- 79** Vammala beach sauna
- 80** Iron Lake Safari
- 81** Vammala market place (The May Day Car Parade)

Churches

- 29** Tyrvää church
- 39** Tyrvää St. Olaf church

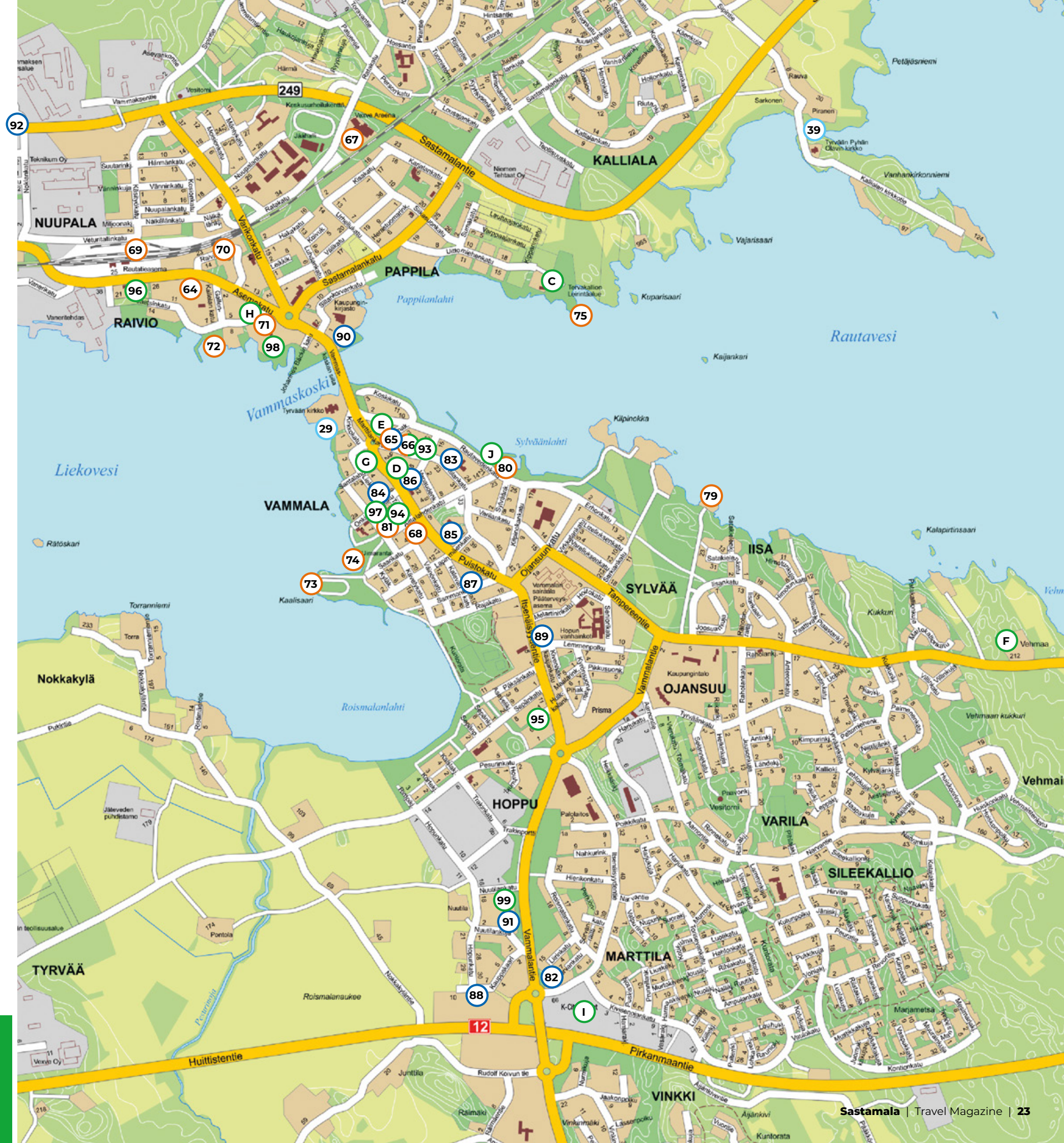
Shopping

- 65** The shop of lovely things
- 82** Ihanamäki bags
- 83** Tyrvää book store
- 84** Kalliokoski design
- 85** Pieni kukka flower shop
- 86** Sastamala taxiservice
- 87** Puistokadun kukkatupa flower shop
- 88** Nokian kauppahuone – fabrics
- 89** Nettomatti bikeshop
- 90** K-Market Meijerinranta grocery
- 91** K-Market Vammala grocery
- 92** Sastamarine bikeshop & boating accessories

Accommodation, restaurants, cafés

- 93** Funkkistalo restaurant
- 94** Restaurant Zarillo
- 95** Bistro15 restaurant
- 96** Liekoranta inn
- 97** Pyymäki cafe
- 98** Tyrvää Parsonage
- 99** Pyymäki bakery
- C** Tervakallio Camping
- D** Hotel Tunneli & Bar Tunneli
- E** Restaurant Ege
- F** Vehmaa Farm
- G** Restaurant Villi Silli
- H** Lunchcafé Sanna
- I** Kotipizza pizzeria
- J** Villi Silli lakeside restaurant

More information on our website:
www.visitsastamala.fi/en



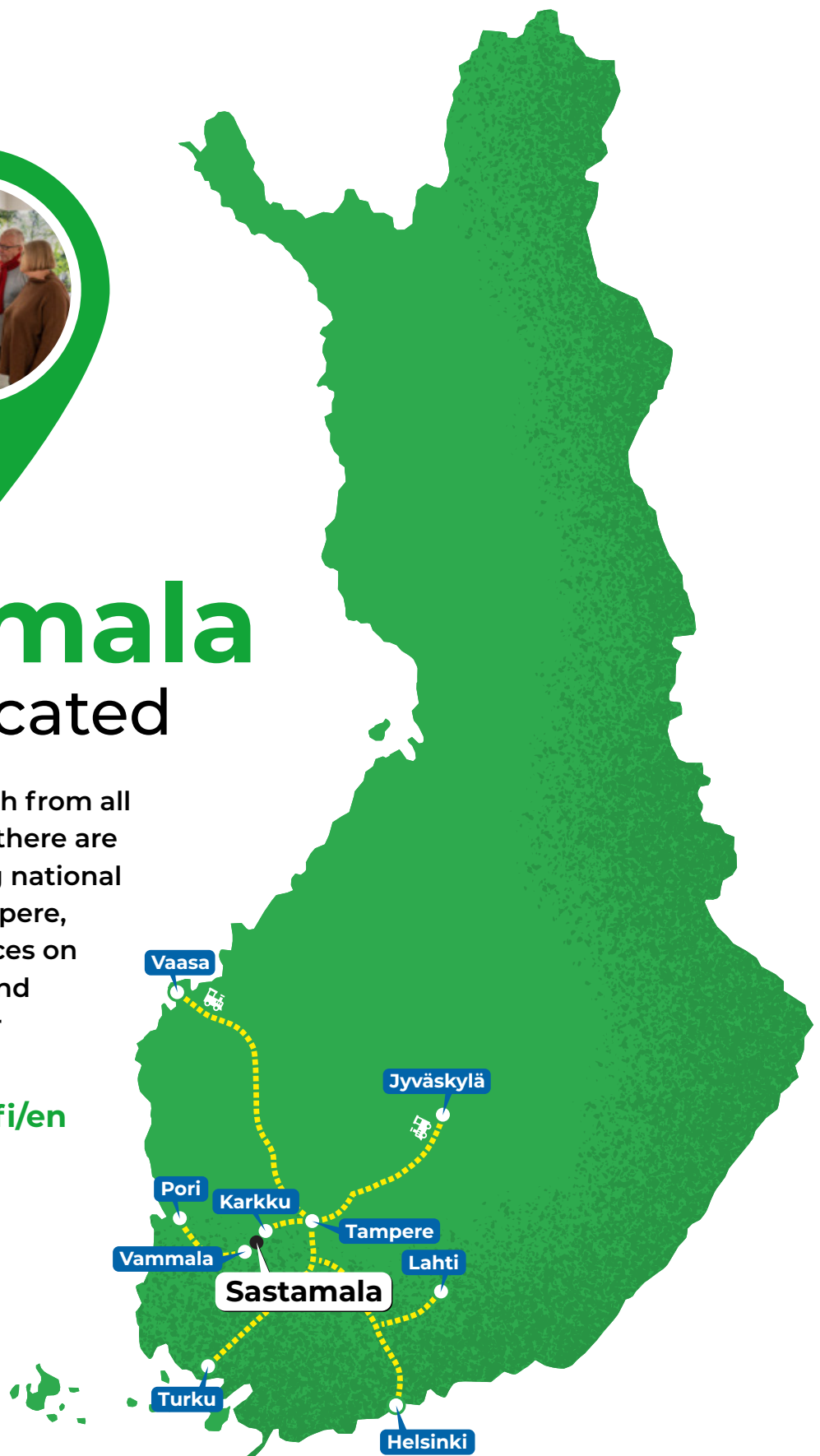


Sastamala

– ideally located

Sastamala is easy to reach from all directions. For example, there are coach connections along national roads 11 and 12 from Tampere, Turku and Pori, rail services on the Tampere–Pori line, and convenient access by car from across Finland.

www.visitsastamala.fi/en



Tourist Information:
c/o Pukstaavi –
Museum of the Finnish Book
Marttilankatu 12
38200 Sastamala

Travel Information:
matkailu@sastamala.fi
Tel. +358 400 229 142
Sastamala City Hall
P.O. Box 23, 38201 Sastamala

SASTAMALA